

**Legislative Appropriations Request**

**For Fiscal Year 2010 and 2011**

**Submitted to the  
Governor's Office of Budget, Planning and Policy  
And the Legislative Budget Board**

**by**

**Central Texas College District**

**August 12, 2008**

**Legislative Appropriations Request**

**For Fiscal Year 2010 and 2011**

**Submitted to the  
Governor's Office of Budget, Planning and Policy  
And the Legislative Budget Board**

**by**

**Central Texas College District**

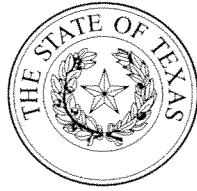
**August 12, 2008**

**(This page intentionally left blank.)**

## Table of Contents

	<u>Page</u>
Certificate .....	iii
Administrators Statement .....	1
Organization Structure.....	5
Summary of Base Request by Strategy-Schedule 2A .....	7
Summary of Base Request by Method of Finance-Schedule 2B .....	9
Summary of Base Request by Object of Expense-Schedule 2C .....	11
Summary of Total Request by Strategy-Schedule 2F .....	13
Group Insurance Data Elements (Community Colleges)-Schedule 3C .....	15
Exceptional Item Request Schedule-Schedule 4A .....	17
Exceptional Items Strategy Allocation Schedule-Schedule 4B .....	19
Exceptional Items Strategy Request-Schedule 4C .....	21

**(This page intentionally left blank.)**



## CERTIFICATE

**Agency Name** Central Texas College District

This is to certify that the information contained in the agency Legislative Appropriations Request filed with the Legislative Budget Board (LBB) and the Governor's Office of Budget, Planning and Policy (GOBPP) is accurate to the best of my knowledge and that the electronic submission to the LBB via the Automated Budget and Evaluation System of Texas (ABEST) and the bound paper copies are identical.

Additionally, should it become likely at any time that unexpended balances will accrue for any account, the LBB and the GOBPP will be notified in writing in accordance with Article IX, Section 7.01 (2008-09 GAA).

**Chief Executive Office or Presiding Judge**

James R. Anderson  
Signature

James R. Anderson, Ph.D.  
Printed Name

Chancellor  
Title

August 12, 2008  
Date

**Board or Commission Chair**

Charles B. Baggett  
Signature

Charles B. Baggett  
Printed Name

Chair, Board of Trustees  
Title

August 12, 2008  
Date

**Chief Financial Officer**

Robert C. Farrell  
Signature

Robert C. Farrell  
Printed Name

DeputyChancellor, Resource Mgmt.  
Title

August 12, 2008  
Date

**(This page intentionally left blank.)**

**ADMINISTRATOR'S STATEMENT**  
81st Regular Session, Agency Submission, Version 1  
Automated Budget and Evaluation System of Texas(ABEST)

DATE: 8/7/2008  
TIME: 10:40:22AM  
PAGE: 1 of 3

Agency code: 955

Agency name: **Central Texas College**

APPROPRIATIONS REQUEST

ADMINISTRATOR'S STATEMENT

HISTORY

In 1965, the citizens of central Texas joined together to build a community college that would serve Bell, Coryell, Lampasas, Mills and seven other central Texas counties as well as Fort Hood and the correctional facilities in Gatesville. The campus was constructed on more than 500 acres of land donated by Fort Hood through the Department of Education and with funds supplied through a local bond. Central Texas College opened its doors with an initial enrollment of 2,068 students in the Fall of 1967, thereby proving that a need for postsecondary education did exist in the central Texas area. The number of students and the location of offerings have steadily increased since that time, but the quality of instruction remains exemplary. Central Texas College has maintained its accredited status with the Southern Association of Colleges and Schools since first being awarded accreditation in 1969, was reaffirmed in 1973, 1984, 1994 and 2005.

Although CTC's primary emphasis is the local area, CTC offers programs and services at locations other than its Central Campus in Killeen, Texas. In response to military requirements from neighboring Fort Hood, CTC initiated programs on the military installation in 1970, and later in 1974, started programs for military personnel in Europe. By 1976, CTC had programs in Fort Leonard Wood (Missouri), South Korea and the Atlantic and Pacific Fleets; and by the early 1980s, CTC offered programs to military personnel stationed in the Pacific Command, Alaska and Panama as well as throughout the continental United States. This expansion occurred locally as well with the initiation of instructional programs and services for the Texas Department of Corrections in Gatesville in 1976. Today, CTC consists of six campuses – the Central Campus, the Continental Campus, the Europe Campus, the Fort Hood/Service Area Campus, the Navy Campus and the Pacific-Far East Campus. Of these, the Central and Fort Hood/Service Area campuses operate within the state of Texas.

CTC's student body is as diverse as the community which it serves. Like other postsecondary institutions, CTC's target population includes 18-22 year olds, but it also includes students who are older, minorities, learning disabled, educationally and economically disadvantaged, second language learners, displaced workers and/or illiterate. These students may select a degree plan from eight Associate of Arts degree programs, 10 Associate of Science degree programs, 50 Associate of Applied Science degree programs or an Associate in General Studies degree program. In addition, students choosing to earn a certificate may enroll in any of the 42 certificate programs. While the Central Campus offers the full range of Associate degree programs and services, the other five campuses generally offer those programs identified through local needs assessments or those specified contractually. The corrections education programs include both degree and certificate opportunities targeted at post-release employability for participants.

CTC also provides a wide range of education and training opportunities for those students who do not select a degree or certificate option. Students may enroll in adult and continuing education courses ranging from literacy training to leatherworking and English as a second language to cake decorating. Committed to serving all students, CTC provides comprehensive programs and services for special populations: disability support services, single parent/homemaker support services and non-traditional career support services as well as tutoring and transportation assistance. To meet the occupational training needs, Central Texas College offers a variety of professional development and job-related skills programs, such as basic literacy skills, leadership skills, foreign language skills and occupational skills programs. Thus, CTC provides educational and training opportunities that are diverse in terms of educational goal and level of functioning.



**ADMINISTRATOR'S STATEMENT**  
81st Regular Session, Agency Submission, Version I  
Automated Budget and Evaluation System of Texas(ABEST)

DATE: 8/7/2008  
TIME: 10:40:27AM  
PAGE: 2 of 3

Agency code: 955

Agency name: **Central Texas College**

#### MISSION

At Central Texas College, we identify and serve our unique, global community needs and provide quality teaching through an accessible learning environment

#### EDUCATIONAL OBJECTIVES

The CTC community is an aggregate of the types of individuals served and the conditions under which they are served, regardless of the geographic location CTC is a public, two-year, open-admissions, coeducational college that provides educational services to the central Texas area to include Fort Hood and an 11-county service area. CTC also provides worldwide educational programs and related services to business, industry, the U.S. military services and to the employees of governmental agencies and their dependents.

CTC provides the following:

- Traditional university parallel courses;
- One-year and two-year occupational education and technology programs;
- General education courses;
- Developmental studies
- Credit and non-credit continuing education courses, as well as service programs on cultural, civic and other topics of community interest;
- Counseling and guidance services to assist students in defining goals, identifying abilities and selecting appropriate courses;
- Placement services are provided to assist students in locating full-time and part-time jobs while they are attending college and to assist students in securing employment after graduation;
- Workforce development programs designed to meet local and statewide needs;
- Adult literacy and other basic skills programs for adults; and
- Such other purposes as may be prescribed by the Texas Higher Education Coordinating Board or the Central Texas College Board of Trustees in the best interest of post-secondary education in Texas;

The College seeks to provide a supportive and challenging environment in which the students can improve their basic intellectual skills, discover and develop their special aptitudes and insights and equip themselves for a fulfilling life and responsible citizenship in a world characterized by change

**ADMINISTRATOR'S STATEMENT**  
81st Regular Session, Agency Submission, Version 1  
Automated Budget and Evaluation System of Texas (ABEST)

DATE: 8/7/2008  
TIME: 10:40:27 AM  
PAGE: 3 of 3

Agency code: 955

Agency name: **Central Texas College**

#### MAJOR OBJECTIVES NEXT BIENNIUM

Like most community colleges in Texas, CTC is confronted with program, enrollment and facilities issues. CTC's Educational Advisory Council has identified those programs in which enrollments are declining, equipment upgrades are needed and curricular changes are required. To meet current and future program requirements, CTC has integrated SCANS in all occupational education certificate and degree programs, uses lay advisory committees, has developed capstone courses for all occupational programs and is establishing cooperative programs with business and industry. In addition, CTC will develop plans for increasing enrollments by updating courses and equipment and revising recruitment and placement for targeted technical vocational programs. During the next years, CTC will concentrate on increasing and improving the use of instructional technology and alternative delivery methods. Nursing, law enforcement, computer programming operations and various medical positions are identified as targeted occupations by the Central Texas Quality Work Force Planning. Therefore, CTC will continue to allocate resources for program growth and development in these areas as well as in the academic transfer programs. Resources will also be committed to upgrading equipment and curricula in industrial technology and technical vocational programs, including printing trades, electronics, criminal justice and computer science. Replacement of computers is an ever increasing part of the planning process and CTC will replace over 550 micro-computers, primarily in classrooms and laboratories, during the next fiscal year. Additionally, CTC will continue to expand its distance education programs to meet the needs of our changing workforce as well as the United States Armed Forces.

Adequate instructional facilities are of primary importance to CTC. CTC, like most other Texas community colleges, is faced with facilities that are nearing 40 years old; consequently, the institution has embarked on a major construction effort. The board of trustees has recently approved a facilities master plan and this year's budget contains approximately \$20 million to fund new facilities and renovate existing facilities.

#### SIGNIFICANT EXTERNAL INFLUENCES

The number of military students enrolled in CTC programs makes military downsizing a critical issue in CTC's planning. Local, national and international locations must consider declining enrollments from reduced troop strength and decreasing revenue from reduced tuition assistance. To maintain current technology for students preparing to enter the workforce and to accommodate students' needs, CTC will seek to provide students with state of the art technology and alternative instructional delivery methods and systems. To do this, CTC must search for alternative funding sources through grants and other contracts. Central Texas College District endorses the additional formula request that was made on July 31, 2008 by the Texas Association of Community Colleges. It is also imperative that the legislature address the expected enrollment shortfalls due to troop rotation to the Middle East. Troop strength at Ft Hood during the upcoming fall semester is expected to be at approximately 50 percent of authorized levels and we are certain this will impact our enrollment significantly.

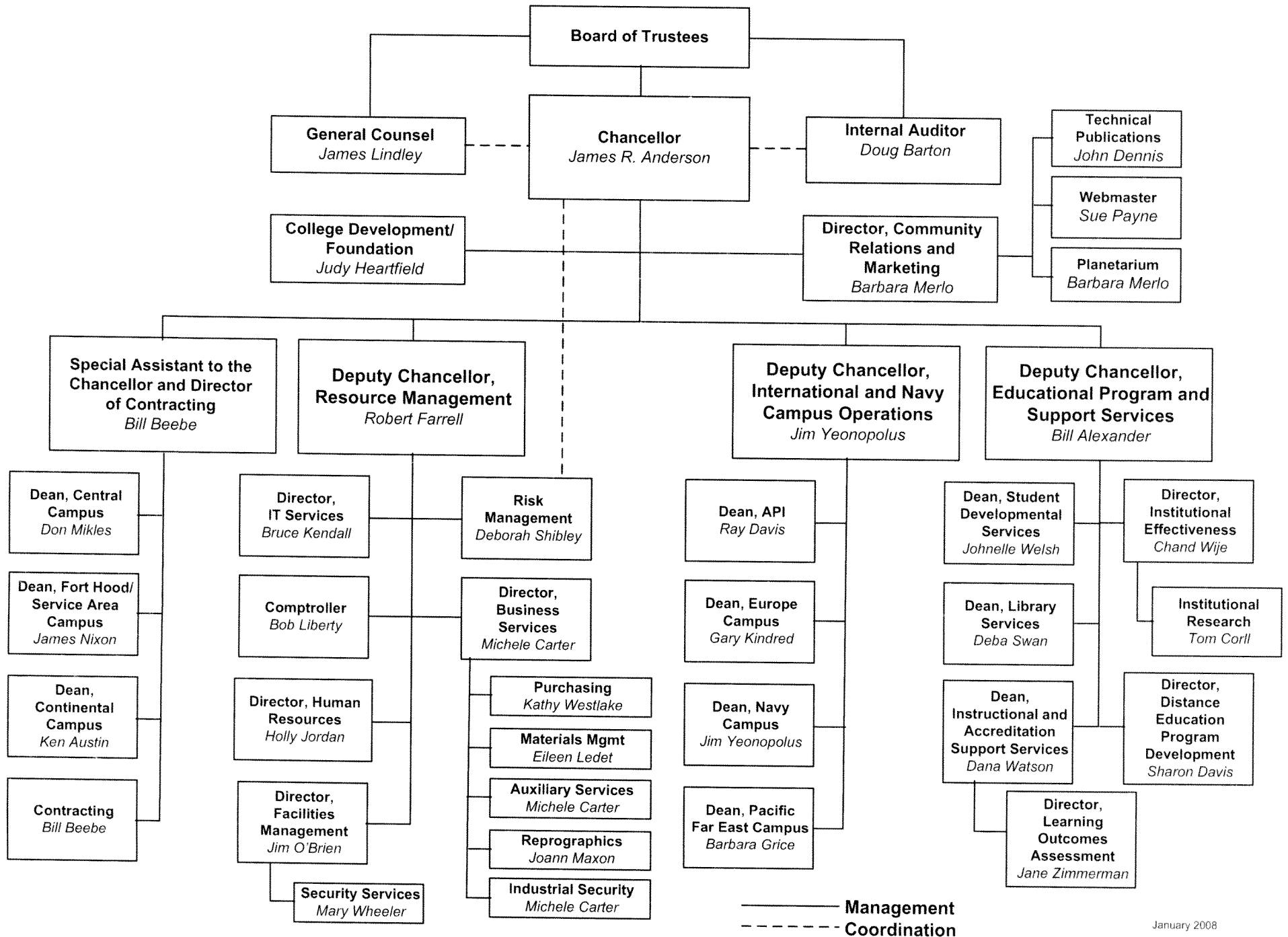
As directed Central Texas College requested in Schedule 3C: Group Insurance Data Elements (Community Colleges) the proportional amount calculated by dividing General Revenue dollars (\$19,375,088) by the total salaries (\$62,592,147) from the 2007 Community Colleges Benefits Proportional by Fund Report.

Central Texas College operates contracts with the United States Armed Forces worldwide and employs personnel who are not eligible for Group Insurance (Insurance Code Sec. 1551.110). Since total salaries reflected on the Proportionality report contains these salaries the proportional amount calculated as directed results in a proportion which is less than actual. Using the same logic but subtracting salaries for non eligible personnel (\$25,153,389) Central Texas College's proportion increases from 31% to 52% and the State enrollment proportion increases from 283 to 472. Using an average cost per enrollment of \$5,331 per year multiplied by the increase of 189 Central Texas College is requesting the amount of \$1,007,559 per year or \$2,015,118 for the biennium.

**(This page intentionally left blank.)**

# Central Texas College District

## Organizational Structure



**(This page intentionally left blank.)**

2.A. SUMMARY OF BASE REQUEST BY STRATEGY  
 81st Regular Session, Agency Submission, Version 1  
 Automated Budget and Evaluation System of Texas (ABEST)

DATE: 8/6/2008  
 TIME: 4:33:20PM

Agency code: 955 Agency name: Central Texas College

Goal / Objective / STRATEGY	Exp 2007	Est 2008	Bud 2009	Req 2010	Req 2011
1 Provide Instruction					
1 Provide Administration and Instructional Services					
1 ACADEMIC EDUCATION	9,799,176	11,893,660	11,893,660	0	0
2 VOCATIONAL/TECHNICAL EDUCATION	9,591,115	8,119,453	8,119,454	0	0
TOTAL, GOAL 1	\$19,390,291	\$20,013,113	\$20,013,114	\$0	\$0
TOTAL, AGENCY STRATEGY REQUEST	\$19,390,291	\$20,013,113	\$20,013,114	\$0	\$0
TOTAL, AGENCY RIDER APPROPRIATIONS REQUEST*				\$0	\$0
GRAND TOTAL, AGENCY REQUEST	\$19,390,291	\$20,013,113	\$20,013,114	\$0	\$0
<u>METHOD OF FINANCING:</u>					
<b>General Revenue Funds:</b>					
1 General Revenue Fund	19,390,291	20,013,113	20,013,114	0	0
SUBTOTAL	\$19,390,291	\$20,013,113	\$20,013,114	\$0	\$0
TOTAL, METHOD OF FINANCING	\$19,390,291	\$20,013,113	\$20,013,114	\$0	\$0

\*Rider appropriations for the historical years are included in the strategy amounts.

**(This page intentionally left blank.)**

**2.B. SUMMARY OF BASE REQUEST BY METHOD OF FINANCE**  
 81st Regular Session, Agency Submission, Version 1  
 Automated Budget and Evaluation System of Texas (ABEST)

DATE: 8/11/2008  
 TIME: 5:00:05PM

Agency code: 955

Agency name: Central Texas College

METHOD OF FINANCING	Exp 2007	Est 2008	Bud 2009	Req 2010	Req 2011
<b><u>GENERAL REVENUE</u></b>					
<u>1</u> General Revenue Fund					
REGULAR APPROPRIATIONS					
Public Community College Appropriations					
	\$19,390,291	\$20,013,113	\$20,013,114	\$0	\$0
<b>TOTAL, General Revenue Fund</b>	<b>\$19,390,291</b>	<b>\$20,013,113</b>	<b>\$20,013,114</b>	<b>\$0</b>	<b>\$0</b>
<b>TOTAL, ALL GENERAL REVENUE</b>	<b>\$19,390,291</b>	<b>\$20,013,113</b>	<b>\$20,013,114</b>	<b>\$0</b>	<b>\$0</b>
<b>GRAND TOTAL</b>	<b>\$19,390,291</b>	<b>\$20,013,113</b>	<b>\$20,013,114</b>	<b>\$0</b>	<b>\$0</b>
<b><u>FULL-TIME-EQUIVALENT POSITIONS</u></b>					
<b>TOTAL, ADJUSTED FTES</b>					
<b>NUMBER OF 100% FEDERALLY FUNDED FTES</b>	<b>0.0</b>	<b>0.0</b>	<b>0.0</b>	<b>0.0</b>	<b>0.0</b>



**(This page intentionally left blank.)**

2.C. SUMMARY OF BASE REQUEST BY OBJECT OF EXPENSE  
 81st Regular Session, Agency Submission, Version I  
 Automated Budget and Evaluation System of Texas (ABEST)

DATE: 8/6/2008  
 TIME: 4:38:44PM

---

Agency code: 955	Agency name: Central Texas College				
------------------	------------------------------------	--	--	--	--

---

OBJECT OF EXPENSE	Exp 2007	Est 2008	Bud 2009	BL 2010	BL 2011
1001 SALARIES AND WAGES	\$19,390,291	\$20,013,113	\$20,013,114	\$0	\$0
1002 OTHER PERSONNEL COSTS	\$0	\$0	\$0	\$0	\$0
<b>OOE Total (Excluding Riders)</b>	<b>\$19,390,291</b>	<b>\$20,013,113</b>	<b>\$20,013,114</b>	<b>\$0</b>	<b>\$0</b>
<b>OOE Total (Riders)</b>					
<b>Grand Total</b>	<b>\$19,390,291</b>	<b>\$20,013,113</b>	<b>\$20,013,114</b>	<b>\$0</b>	<b>\$0</b>

---

**(This page intentionally left blank.)**

**2.F. SUMMARY OF TOTAL REQUEST BY STRATEGY**  
 81st Regular Session, Agency Submission, Version 1  
 Automated Budget and Evaluation System of Texas (ABEST)

DATE : 8/11/2008  
 TIME : 5:01:27PM

Agency code: 955                      Agency name: Central Texas College

<b>Goal/Objective/STRATEGY</b>	<b>Base 2010</b>	<b>Base 2011</b>	<b>Exceptional 2010</b>	<b>Exceptional 2011</b>	<b>Total Request 2010</b>	<b>Total Request 2011</b>
1 Provide Instruction						
1 Provide Administration and Instructional Services						
1 ACADEMIC EDUCATION	\$0	\$0	\$508,817	\$508,817	\$508,817	\$508,817
2 VOCATIONAL/TECHNICAL EDUCATION	0	0	498,742	498,742	498,742	498,742
<b>TOTAL, GOAL 1</b>	<b>\$0</b>	<b>\$0</b>	<b>\$1,007,559</b>	<b>\$1,007,559</b>	<b>\$1,007,559</b>	<b>\$1,007,559</b>
<b>TOTAL, AGENCY STRATEGY REQUEST</b>	<b>\$0</b>	<b>\$0</b>	<b>\$1,007,559</b>	<b>\$1,007,559</b>	<b>\$1,007,559</b>	<b>\$1,007,559</b>
<b>TOTAL, AGENCY RIDER APPROPRIATIONS REQUEST</b>						
<b>GRAND TOTAL, AGENCY REQUEST</b>	<b>\$0</b>	<b>\$0</b>	<b>\$1,007,559</b>	<b>\$1,007,559</b>	<b>\$1,007,559</b>	<b>\$1,007,559</b>

**2.F. SUMMARY OF TOTAL REQUEST BY STRATEGY**  
 81st Regular Session, Agency Submission, Version 1  
 Automated Budget and Evaluation System of Texas (ABEST)

DATE : 8/11/2008  
 TIME : 5:01:21PM

Agency code: 955 Agency name: Central Texas College

<b>Goal/Objective/STRATEGY</b>	<b>Base 2010</b>	<b>Base 2011</b>	<b>Exceptional 2010</b>	<b>Exceptional 2011</b>	<b>Total Request 2010</b>	<b>Total Request 2011</b>
<b>General Revenue Funds:</b>						
1 General Revenue Fund	\$0	\$0	\$1,007,559	\$1,007,559	\$1,007,559	\$1,007,559
	<b>\$0</b>	<b>\$0</b>	<b>\$1,007,559</b>	<b>\$1,007,559</b>	<b>\$1,007,559</b>	<b>\$1,007,559</b>
<b>TOTAL, METHOD OF FINANCING</b>	<b>\$0</b>	<b>\$0</b>	<b>\$1,007,559</b>	<b>\$1,007,559</b>	<b>\$1,007,559</b>	<b>\$1,007,559</b>
<b>FULL TIME EQUIVALENT POSITIONS</b>						

**Schedule 3C: Group Insurance Data Elements (Community Colleges)**  
 81st Regular Session, Agency Submission, Version I  
 Automated Budget and Evaluation System of Texas (ABEST)

Date: 8/7/2008  
 Time: 7:53:55AM  
 Page: 1 of 2

Agency Code: 955      Agency Code: Central Texas College

	Total I & A Enrollment	Local Non I & A	State Enrollment	District Enrollment	Total Enrollment
<b>GENERAL REVENUE / SALARIES</b>					
Unrestricted General Revenue:	19,375,088	State Proportional Share:	30.95%		
Total Salaries:	62,592,147	District Proportional Share:	69.05%		
<b>FULL TIME ACTIVES</b>					
1a Employee Only	248	147	122	273	395
2a Employee and Children	73	20	29	64	93
3a Employee and Spouse	63	22	26	59	85
4a Employee and Family	35	20	17	38	55
5a Eligible, Opt Out	0	0	0	0	0
6a Eligible, Not Enrolled	123	160	88	195	283
<b>Total for this Section</b>	<b>542</b>	<b>369</b>	<b>282</b>	<b>629</b>	<b>911</b>
<b>PART TIME ACTIVES</b>					
1b Employee Only	0	1	0	1	1
2b Employee and Children	0	0	0	0	0
3b Employee and Spouse	0	0	0	0	0
4b Employee and Family	0	0	0	0	0
5b Eligible, Opt Out	0	0	0	0	0
6b Eligible, Not Enrolled	2	0	1	1	2
<b>Total for this Section</b>	<b>2</b>	<b>1</b>	<b>1</b>	<b>2</b>	<b>3</b>
<b>Total Active Enrollment</b>	<b>544</b>	<b>370</b>	<b>283</b>	<b>631</b>	<b>914</b>
<b>FULL TIME RETIREES by ERS</b>					
1c Employee Only	0	0	0	0	0
2c Employee and Children	0	0	0	0	0
3c Employee and Spouse	0	0	0	0	0
4c Employee and Family	0	0	0	0	0
5c Eligible, Opt Out	0	0	0	0	0
6c Eligible, Not Enrolled	0	0	0	0	0
<b>Total for this Section</b>	<b>0</b>	<b>0</b>	<b>0</b>	<b>0</b>	<b>0</b>

**Schedule 3C: Group Insurance Data Elements (Community Colleges)**  
 81st Regular Session, Agency Submission, Version 1  
 Automated Budget and Evaluation System of Texas (ABEST)

Date: 8/7/2008  
 Time: 7:54:22AM  
 Page: 2 of 2

Agency Code: 955

Agency Code: Central Texas College

	<b>Total I &amp; A Enrollment</b>	<b>Local Non I &amp; A</b>	<b>State Enrollment</b>	<b>District Enrollment</b>	<b>Total Enrollment</b>
<b>PART TIME RETIREES by ERS</b>					
1d Employee Only	0	0	0	0	0
2d Employee and Children	0	0	0	0	0
3d Employee and Spouse	0	0	0	0	0
4d Employee and Family	0	0	0	0	0
5d Eligible, Opt Out	0	0	0	0	0
6d Eligible, Not Enrolled	0	0	0	0	0
<b>Total for this Section</b>	<b>0</b>	<b>0</b>	<b>0</b>	<b>0</b>	<b>0</b>
<b>Total Retirees Enrollment</b>	<b>0</b>	<b>0</b>	<b>0</b>	<b>0</b>	<b>0</b>
<b>TOTAL FULL TIME ENROLLMENT</b>					
1e Employee Only	248	147	122	273	395
2e Employee and Children	73	20	29	64	93
3e Employee and Spouse	63	22	26	59	85
4e Employee and Family	35	20	17	38	55
5e Eligible, Opt Out	0	0	0	0	0
6e Eligible, Not Enrolled	123	160	88	195	283
<b>Total for this Section</b>	<b>542</b>	<b>369</b>	<b>282</b>	<b>629</b>	<b>911</b>
<b>TOTAL ENROLLMENT</b>					
1f Employee Only	248	148	122	274	396
2f Employee and Children	73	20	29	64	93
3f Employee and Spouse	63	22	26	59	85
4f Employee and Family	35	20	17	38	55
5f Eligible, Opt Out	0	0	0	0	0
6f Eligible, Not Enrolled	125	160	89	196	285
<b>Total for this Section</b>	<b>544</b>	<b>370</b>	<b>283</b>	<b>631</b>	<b>914</b>

**4.A. EXCEPTIONAL ITEM REQUEST SCHEDULE**  
 81st Regular Session, Agency Submission, Version 1  
 Automated Budget and Evaluation System of Texas (ABEST)

DATE: 8/11/2008  
 TIME: 5:06:43PM

Agency code: 955

Agency name:

Central Texas College

CODE	DESCRIPTION	Excp 2010	Excp 2011
	Item Name: Restoration of Group Insurance Appropriations		
	Item Priority: 1		
	Includes Funding for the Following Strategy or Strategies:		
	01-01-01 Academic Education		
	01-01-02 Vocational/Technical Education		
<b>OBJECTS OF EXPENSE:</b>			
1002	OTHER PERSONNEL COSTS	1,007,559	1,007,559
	<b>TOTAL, OBJECT OF EXPENSE</b>	<b>\$1,007,559</b>	<b>\$1,007,559</b>
<b>METHOD OF FINANCING:</b>			
1	General Revenue Fund	1,007,559	1,007,559
	<b>TOTAL, METHOD OF FINANCING</b>	<b>\$1,007,559</b>	<b>\$1,007,559</b>

**DESCRIPTION / JUSTIFICATION:**

As directed Central Texas College requested in Schedule 3C: Group insurance Data Elements (Community Colleges) the proportional amount calculated by dividing General Revenue dollars (\$19,375,088) by the total salaries (\$62,592,147) from the 2007 Community Colleges Benefits Proportional by Fund Report.

**EXTERNAL/INTERNAL FACTORS:**

Central Texas College operates contracts with the United States Armed Forces worldwide and employs personnel who are not eligible for Group Insurance (Insurance Code Sec. 1551.110). Since total salaries reflected on the Proportionality report contains these salaries the proportional amount calculated as directed results in a porportion which is less than actual. Using the same logic but subtracting salaries for non eligible personnel (\$25,153,389) Central Texas Colleges proportion increases from 31% to 52% and the State enrollment proportion increases from 283 to 472. Using an average cost per enrollment of \$ 5,331 per year multiplied by the increase of 189 Central Texas College is requesting the amount of \$1,007,559 per year or \$2,015,118 for the biennium.



**(This page intentionally left blank.)**

**4.B. EXCEPTIONAL ITEMS STRATEGY ALLOCATION SCHEDULE**

81st Regular Session, Agency Submission, Version 1  
Automated Budget and Evaluation System of Texas (ABEST)

DATE: **8/11/2008**  
TIME: **5:07:15PM**

Agency code: **955**

Agency name: **Central Texas College**

Code	Description	Excp 2010	Excp 2011
<b>Item Name:</b>	Restoration of Group Insurance Appropriations		
<b>Allocation to Strategy:</b>	1-1-1 Academic Education		
<b>OBJECTS OF EXPENSE:</b>			
1002	OTHER PERSONNEL COSTS	508,817	508,817
<b>TOTAL, OBJECT OF EXPENSE</b>		<b>508,817</b>	<b>508,817</b>
<b>METHOD OF FINANCING:</b>			
1	General Revenue Fund	508,817	508,817
<b>TOTAL, METHOD OF FINANCING</b>		<b>508,817</b>	<b>508,817</b>

**4.B. EXCEPTIONAL ITEMS STRATEGY ALLOCATION SCHEDULE**

DATE: 8/11/2008  
 TIME: 5:07:19PM

81st Regular Session, Agency Submission, Version 1  
 Automated Budget and Evaluation System of Texas (ABEST)

Agency code: 955

Agency name: Central Texas College

Code	Description	Excp 2010	Excp 2011
<b>Item Name:</b>	Restoration of Group Insurance Appropriations		
<b>Allocation to Strategy:</b>	1-1-2 Vocational/Technical Education		
<b>OBJECTS OF EXPENSE:</b>			
1002	OTHER PERSONNEL COSTS	498,742	498,742
<b>TOTAL, OBJECT OF EXPENSE</b>		<b>\$498,742</b>	<b>\$498,742</b>
<b>METHOD OF FINANCING:</b>			
1	General Revenue Fund	498,742	498,742
<b>TOTAL, METHOD OF FINANCING</b>		<b>\$498,742</b>	<b>\$498,742</b>

**4.C. EXCEPTIONAL ITEMS STRATEGY REQUEST**  
 81st Regular Session, Agency Submission, Version 1  
 Automated Budget and Evaluation System of Texas (ABEST)

**DATE: 8/11/2008**  
**TIME: 5:07:37PM**

Agency Code: **955**

Agency name: **Central Texas College**

GOAL: 1 Provide Instruction  
 OBJECTIVE: 1 Provide Administration and Instructional Services  
 STRATEGY: 1 Academic Education

Statewide Goal/Benchmark: 2 - 0  
 Service Categories:  
 Service: 19 Income: A.2 Age: B.3

<b>CODE DESCRIPTION</b>	<b>Excp 2010</b>	<b>Excp 2011</b>
-------------------------	------------------	------------------

**OBJECTS OF EXPENSE:**

1002 OTHER PERSONNEL COSTS	508,817	508,817
<b>Total, Objects of Expense</b>	<b>\$508,817</b>	<b>\$508,817</b>

**METHOD OF FINANCING:**

1 General Revenue Fund	508,817	508,817
<b>Total, Method of Finance</b>	<b>\$508,817</b>	<b>\$508,817</b>

**EXCEPTIONAL ITEM(S) INCLUDED IN STRATEGY:**

Restoration of Group Insurance Appropriations

**4.C. EXCEPTIONAL ITEMS STRATEGY REQUEST**  
 81st Regular Session, Agency Submission, Version 1  
 Automated Budget and Evaluation System of Texas (ABEST)

**DATE:** 8/11/2008  
**TIME:** 5:08:03PM

Agency Code: **955** Agency name: **Central Texas College**

GOAL:	1 Provide Instruction	Statewide Goal/Benchmark:	2 - 0
OBJECTIVE:	1 Provide Administration and Instructional Services	Service Categories:	
STRATEGY:	2 Vocational/Technical Education	Service: 19	Income: A.2 Age: B.3

<u>CODE DESCRIPTION</u>	<u>Excp 2010</u>	<u>Excp 2011</u>
-------------------------	------------------	------------------

**OBJECTS OF EXPENSE:**

1002 OTHER PERSONNEL COSTS	498,742	498,742
<b>Total, Objects of Expense</b>	<b>\$498,742</b>	<b>\$498,742</b>

**METHOD OF FINANCING:**

1 General Revenue Fund	498,742	498,742
<b>Total, Method of Finance</b>	<b>\$498,742</b>	<b>\$498,742</b>

**EXCEPTIONAL ITEM(S) INCLUDED IN STRATEGY:**

Restoration of Group Insurance Appropriations