

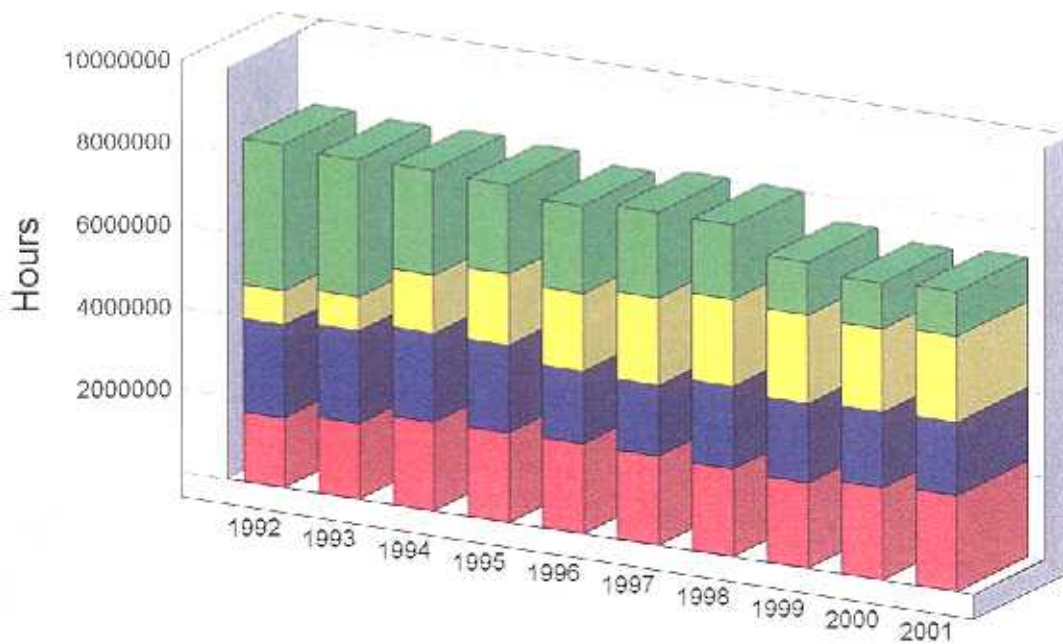
CENTRAL TEXAS COLLEGE

Contact Hour Production (Unaudited)

Texas Campuses
State Funded

Continental & International Campuses
Non-State Funded

Fiscal Year	Academic	Vocational	Academic	Vocational	Total
1992	1,694,774	2,255,748	827,472	3,550,693	8,328,687
1993	1,840,328	2,254,520	816,219	3,333,346	8,244,413
1994	2,144,800	2,169,448	1,399,040	2,561,035	8,274,323
1995	2,166,312	2,135,600	1,716,056	2,167,328	8,185,296
1996	2,176,072	1,763,704	1,893,628	2,118,575	7,951,979
1997	2,150,512	1,730,592	2,104,928	2,089,552	8,075,584
1998	2,124,008	2,008,656	2,103,332	1,811,372	8,047,368
1999	2,061,360	1,925,360	2,148,340	1,282,712	7,417,772
2000	2,217,712	1,841,392	2,023,984	1,110,472	7,193,560
2001	2,320,240	1,780,896	2,074,120	1,094,387	7,269,643



■ Texas Academic
 ■ Texas Vocational
 ■ C&I Academic
 ■ C&I Vocational