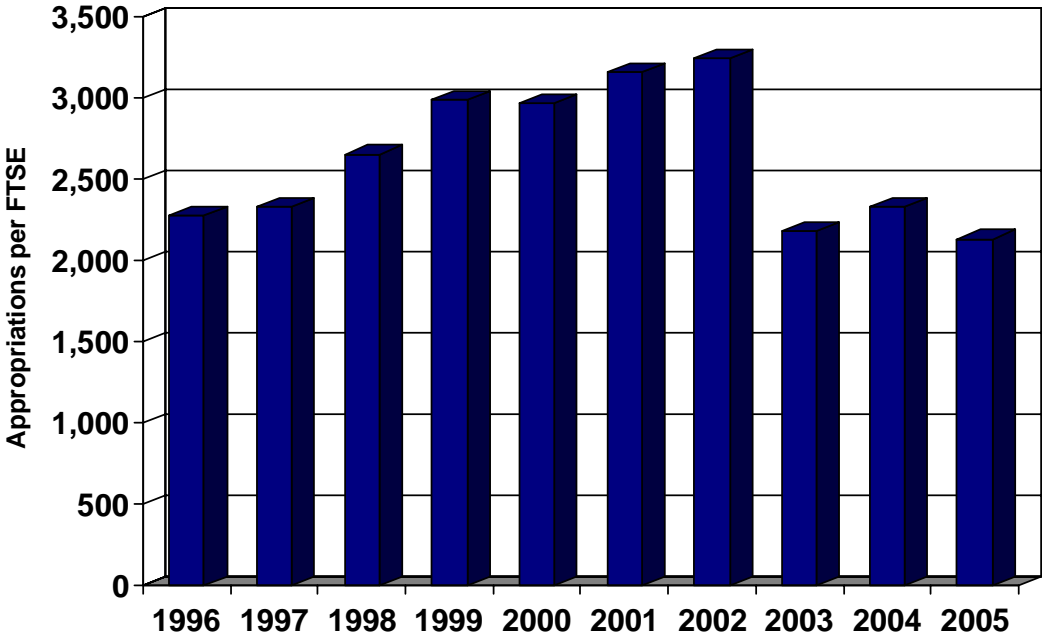


# CENTRAL TEXAS COLLEGE

## State Contact Hour Funding (Unaudited)

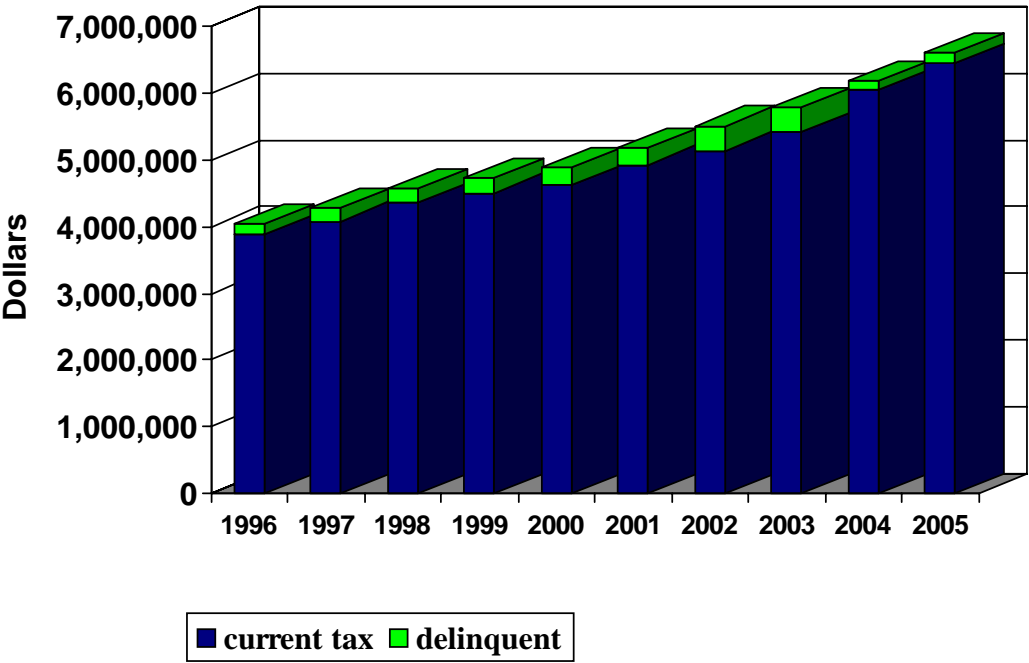
Fiscal Year	State Appropriations	Appropriations per FTSE
1996	\$13,725,096	\$2,274
1997	13,724,193	2,325
1998	16,968,668	2,654
1999	17,646,060	2,991
2000	17,520,431	2,965
2001	17,979,385	3,156
2002	18,466,157	3,242
2003	17,061,674	2,183
2004	17,842,837	2,331
2005	17,842,668	2,133



# CENTRAL TEXAS COLLEGE

## Tax Collections by Fiscal Year (Unaudited)

Fiscal Year	Current Tax Collection	Delinquent Collections	Total Tax Collections
1996	\$3,874,509	\$175,016	\$4,409,525
1997	4,077,661	201,406	4,279,067
1998	4,352,246	212,539	4,564,785
1999	4,501,795	218,971	4,720,766
2000	4,628,460	258,865	4,887,325
2001	4,927,074	246,398	5,173,472
2002	5,137,738	365,636	5,503,374
2003	5,408,880	369,928	5,778,808
2004	6,046,950	124,309	6,171,259
2005	6,449,884	142,427	6,592,311

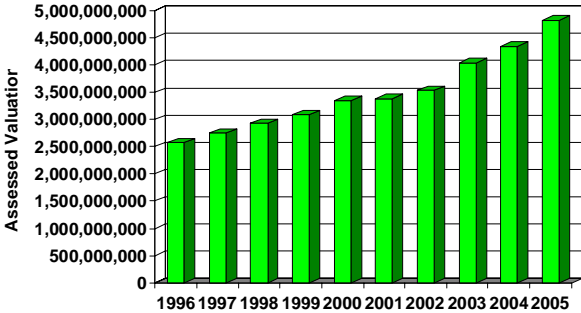
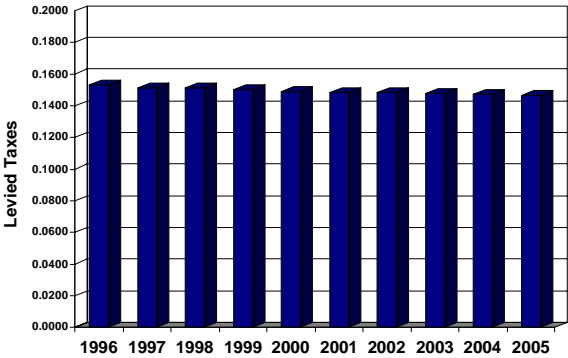


# CENTRAL TEXAS COLLEGE

## Property Taxes Cents per \$100 Evaluation (Unaudited)

### Current Operations

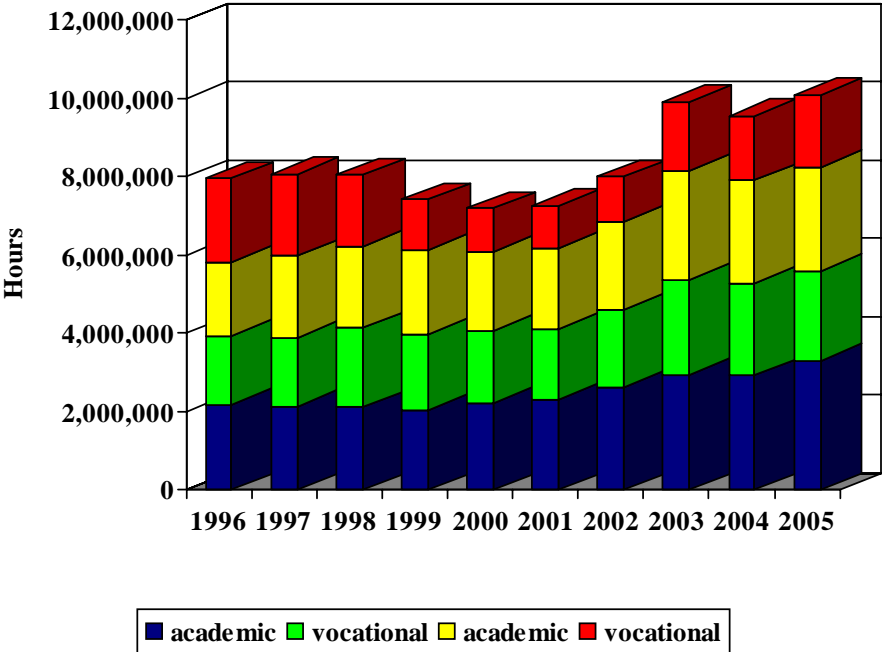
Fiscal Year	Levied/\$100	Authorized/\$100	Assessed Valuation
1996	\$0.1533	\$0.2500	\$2,572,971,836
1997	0.1515	0.2500	2,749,849,560
1998	0.1515	0.2500	2,928,161,265
1999	0.1500	0.2500	3,089,453,481
2000	0.1490	0.2500	3,345,248,322
2001	0.1485	0.2500	3,382,050,924
2002	0.1485	0.2500	3,536,694,762
2003	0.1475	0.2500	4,041,498,200
2004	0.1470	0.2500	4,342,805,438
2005	0.1460	0.2500	4,819,087,918



# CENTRAL TEXAS COLLEGE

## Contact Hour Production (Unaudited)

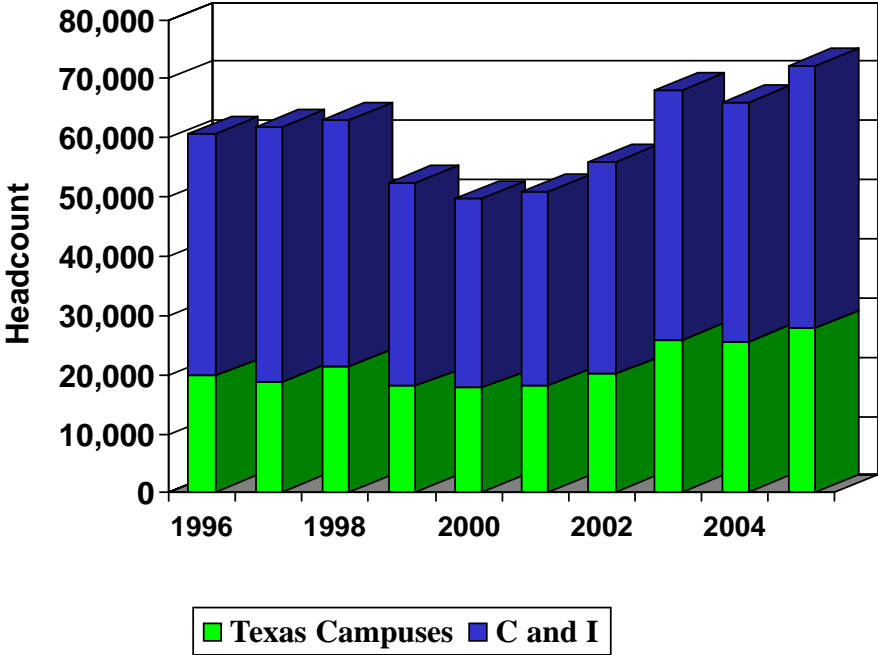
Fiscal Year	Texas Campuses State Funded		C&I Campuses Non-State Funded		Total
	Academic	Vocational	Academic	Vocational	
1996	2,176,072	1,763,704	1,893,628	2,118,575	7,951,979
1997	2,150,512	1,730,592	2,104,928	2,089,552	8,075,584
1998	2,124,008	2,008,656	2,103,332	1,811,372	8,047,368
1999	2,061,360	1,925,360	2,148,340	1,282,712	7,417,772
2000	2,217,712	1,841,392	2,023,984	1,110,472	7,193,560
2001	2,320,240	1,780,896	2,074,120	1,094,387	7,269,643
2002	2,645,416	1,961,081	2,255,032	1,131,483	7,993,012
2003	2,952,936	2,429,786	2,762,912	1,762,570	9,908,204
2004	2,919,552	2,365,468	2,630,960	1,643,296	9,559,276
2005	3,307,456	2,281,011	2,660,764	1,832,382	10,081,613



# CENTRAL TEXAS COLLEGE

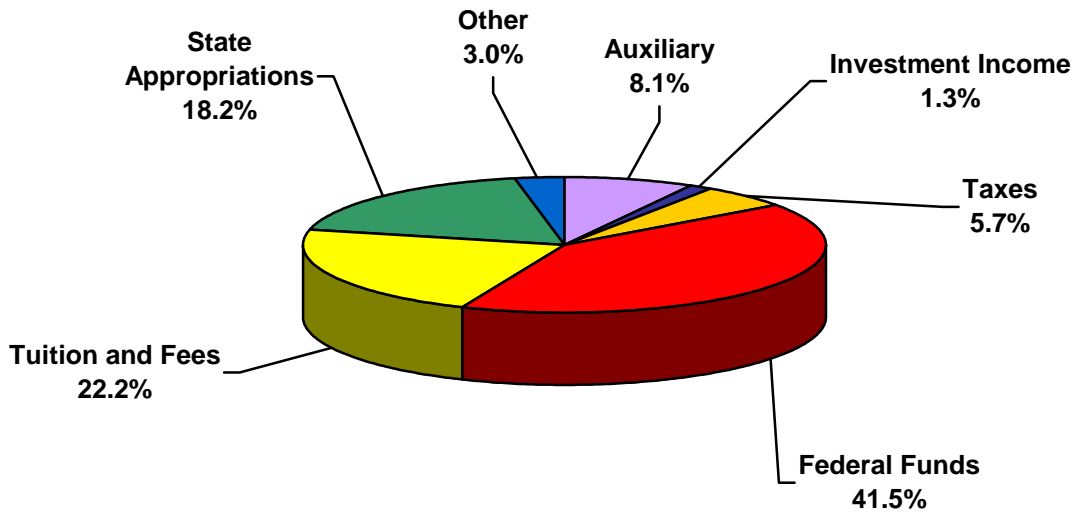
## Headcount Enrollments (Unaudited)

Fiscal Year	Texas Campuses	Continental & International	Total
	State Funded	Non-State Funded	
1996	19,771	40,915	60,686
1997	18,861	43,101	61,962
1998	21,383	41,641	63,024
1999	18,014	34,510	52,524
2000	17,709	32,080	49,789
2001	18,125	32,831	50,956
2002	20,069	35,761	55,830
2003	25,739	42,221	67,960
2004	25,467	40,455	65,922
2005	27,828	44,335	72,163



# CENTRAL TEXAS COLLEGE

## Revenue by Source 2005 (Unaudited)



	<b>Dollars</b>	<b>%</b>
State Appropriations	\$21,095,382	18.2%
Tuition and Fees	25,665,667	22.2%
Taxes	6,592,311	5.7%
Other	3,552,066	3.0%
Federal Funds	47,940,762	41.5%
Investment Income	1,462,346	1.3%
Auxiliary	9,319,999	8.1%
<b>Totals</b>	<b>\$115,628,533</b>	<b>100.0%</b>