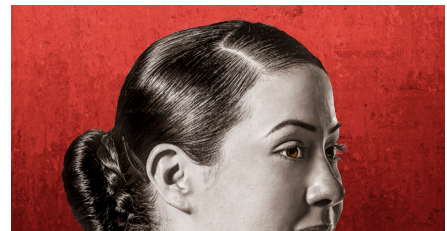
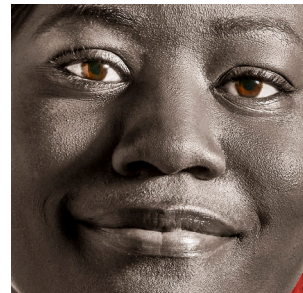
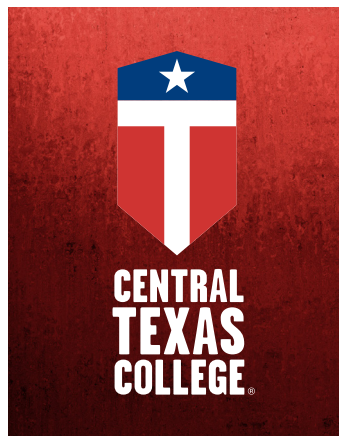




**2020/21**  
**CONTINENTAL &**  
**INTERNATIONAL**  
**CAMPUSES**



**COURSE**  
**CATALOG**  
**Spring**  
**Addendum**





This addendum reflects updates and corrections to the 2020/2021 Central Texas College-Continental & International Campus Catalog compiled in **October 2020**.

Catalog Page #	Section	Description
144	Programs of Study	Teaching Certification title changed to Teacher Education

This addendum reflects updates and corrections to the 2020/2021 Central Texas College-Continental & International Campus Catalog compiled in **January 2021**.

Catalog Page #	Section	Description
12	Refund Schedule	Replaced Refund Schedule table with new table. The refund policy did not change but the table display changed.

Central Texas College has made every effort to assure the accuracy of the information in this addendum. Users of this addendum should be aware that policies, rules, procedures and regulations change, and that these changes may alter the information contained in this publication. The college reserves the right to change policies, regulations, fees and courses of instruction upon direction by the Central Texas College Board of Trustees. The most current and complete information is available from the appropriate campus departments.