

Student Resources

Essential Information

Blackboard, BioSig-ID™, SafeAssign

WebAdvisor

CTC EagleMail

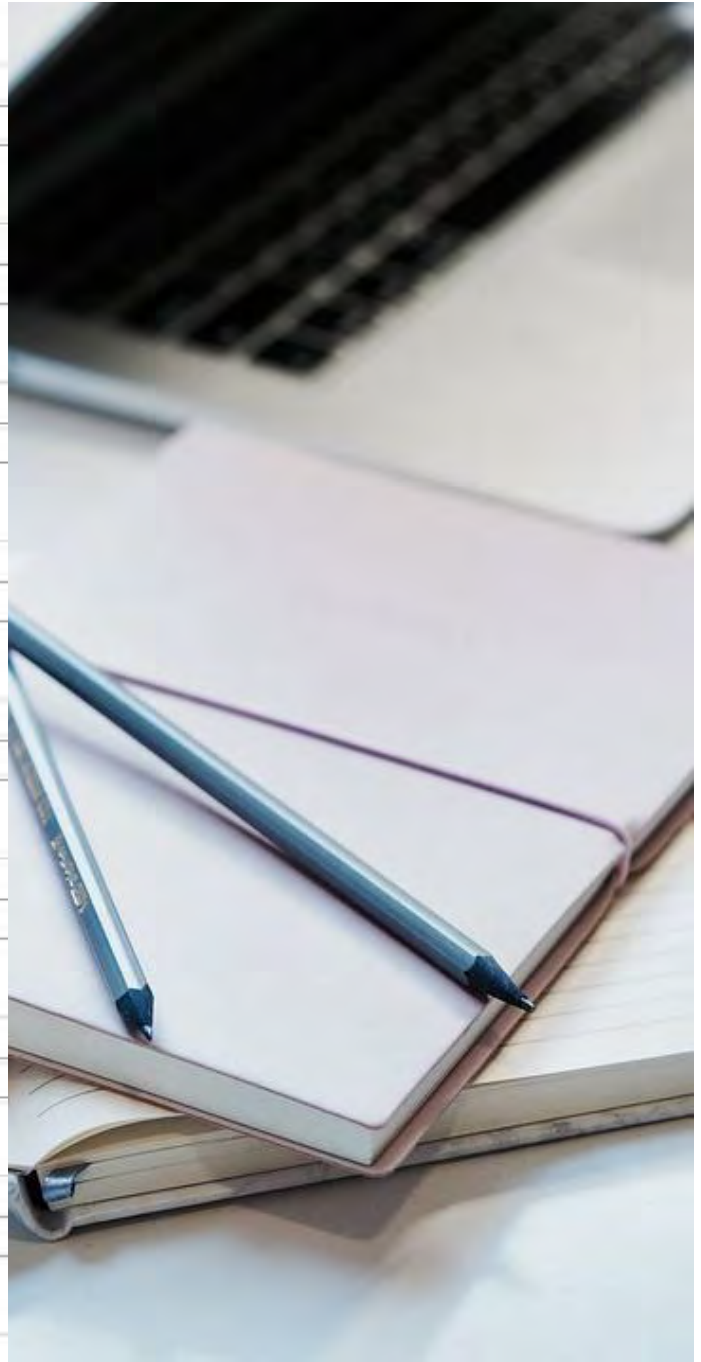
CTC Student Support Services

Course Evaluations

Books

Tutorials and Tutoring

Distance Education Videos



https://online.ctcd.edu/student_resources.cfm

Get a career that works wherever you go!

Application for Admission

New and Returning Students

<http://www.ctcd.edu/>

Registration

www.ctcd.edu/webadvisorinfo/

<https://webadvisor.ctcd.org>

Class Schedule

http://soarapp.ctcd.org/online_forms/schedule/schedule2.cfm

<http://www.ctcd.edu/locations/europe/programs/votech/schedule/>

For assistance, please contact your local Site Coordinator at

<http://www.ctcd.edu/fieldsites>

Student Resources

https://online.ctcd.edu/student_resources.cfm

Army Students

After being admitted to CTC, all Army students must select the same degree plan (Education Path) in ArmyIgnitED at <https://www.armyignited.com/app/>

After registering for the class in WebAdvisor, Army students should request TA in ArmyIgnitED. For additional information and help, please contact:

EaglesOnCall@ctcd.edu

Financial Aid: financial.aid@europe.ctcd.edu & www.ctcd.edu/europe-fa



Apply Now

Request Info

Explore Academic Programs

STUDENT TOOLS ▾

STUDENTS ▾

ACADEMICS ▾

LOCATIONS ▾

ABOUT CTC ▾

SEARCH CTC 🔍 ▾

Student COVID-19 Updates

[WebAdvisor](#)

[Search Courses & Sections](#)

[Blackboard](#)

[Student Forms - eForms](#)

[Student Email](#)

[Transcript Request](#)



Find us on the Web

www.ctcd.edu

www.ctcd.edu/europe

Ordering Books

<http://bookstore.mbsdirect.net/ctc.htm>

Access your class in Blackboard:

<https://ctc.blackboard.com/webapps/login/>

For course descriptions and special requirements, see our [Continental International Catalog](#)